

# MB REMOTE KEYMAKER

by MBE



*\* First in the World key programmer for both transponder and remote*

*\* Works for adding the key and in "all keys lost" situation*

**v. 03.2021**

# Works for:



2007-2018  
Dodge Sprinter W(C)906



2003-2008  
Chrysler Crossfire



1996-2004  
Mercedes SLK Class R170  
(all types)



Jun 1, 1997-2001  
Mercedes SL Class R129



Jun 1, 1997-1999  
Mercedes S-Class W140



Jun 1, 1997-2001  
Mercedes G-Class W461



1997-2005  
Mercedes A-Class W168



2001-2005  
Mercedes Vaneo W414

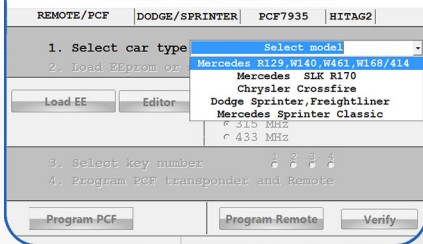
\* Works only with new remote keys manufactured by MBE  
(one exception - OEM refurbished key can be used for W163).

## 1. Adding the key

You must have at least one working remote for the vehicle.  
Removal of SKREEM module in this case is not required.

**All steps must be completed in order, no steps can be skipped/alterd. Please read carefully.**

### KR55 KEYMAKER

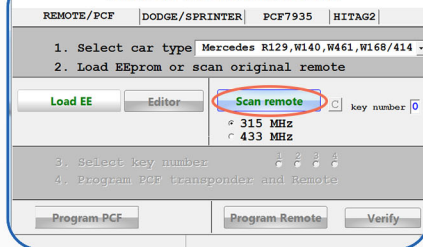


1. Start KR55 KeyMaker software.

2. Select “PCF/REMOTE” tab.

3. Choose model of the vehicle and frequency of the key. Usually for US and Asian market it's 315 MHz, for the rest of the World - 433 Mhz. After choosing of vehicle type, Keymaker will confirm your choice by voice.

### KR55 KEYMAKER



4. Click “Scan remote” button.



5. Hold the original working remote near Keymaker's programming slot and press “Lock” or “Unlock” button on remote. Original key number will be displayed and selection field will become active. Select one of the available key slots.

# Mercedes R129, W140, W461, W168, W414

## KR55 KEYMAKER

REMOTE/PCF | DODGE/SPRINTER | PCF7935 | HITAG2

1. Select car type Mercedes R129,W140,W461,W168/414
2. Load EEPROM or scan original remote

Load EE

Editor

Scan remote

key number 2

315 MHz  
433 MHz CLOSE BUTTON

3. Select key number 1 2 3 4
4. Program PCF transponder and Remote

Program PCF

Program Remote

Verify

SCANNED CORRECTLY

6. Click **“PROGRAM REMOTE”** button.
7. Put a new remote in KeyMaker's programming coil as shown.
8. Press and hold **“Unlock”** button on the new remote until you will hear confirmation sound. Blue light will flash and message **“OK, please click verify button”** will appear.
9. Click **“VERIFY”** button. Now press any button on the new fob. **“OK”** message and sound will confirm successful programming.



## 10. Transponder programming.

Put key with already programmed remote in Keymaker's programming coil. Click **“PCF PROGRAM”** button. **“OK”** message and **“start”** sound will confirm successful transponder programming.

11. Cut the key blade.
12. Now go to the vehicle with new key. If key was correctly programmed, vehicle should start. Turn ignition off, pull key out. Quickly press any button on the remote 5-6 times. Insert key in ignition, turn ignition on (do not start). Quick press any button on the remote few times (5-6 times). Turn ignition off, pull the key out. Remote should start working. Check all functions of the key. Programming is complete.

## KR55 KEYMAKER

REMOTE/PCF | DODGE/SPRINTER | PCF7935 | HITAG2

1. Select car type Mercedes R129,W140,W461,W168/414
2. Load EEPROM or scan original remote

Load EE

Editor

Scan remote

key number 2

315 MHz  
433 MHz CLOSE BUTTON

3. Select key number 1 2 3 4
4. Program PCF transponder and Remote

Program PCF

Program Remote

Verify

Reading

## KR55 KEYMAKER

REMOTE/PCF | DODGE/SPRINTER | PCF7935 | HITAG2

1. Select car type Mercedes R129,W140,W461,W168/414
2. Load EEPROM or scan original remote

Load EE

Editor

Scan remote

key number 2

315 MHz  
433 MHz CLOSE BUTTON

3. Select key number 1 2 3 4
4. Program PCF transponder and Remote

Program PCF

Program Remote

Verify

Key # 2

## 2. All remotes are lost or no working remote available

In this case SKREEM module removal is required. EEprom memory must be read and saved on the computer.

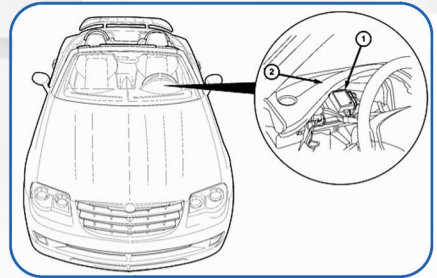
We recommend Orange5, Smok (MBprog) or Carprog programmer with special Click'n Go adapter (corresponding to your SKREEM module model).

In this case no desoldering required, memory safely can be read. Of course, you can use another EEprom programmers at your own risk.

**All steps must be completed in order, no steps can be skipped/alterd. Please read carefully.**



SKREEM adapter with CarProg



SKREEM location

### KR55 KEYSMAKER

REMOTE/PCF	DODGE/SPRINTER	PCF7935	HITAG2
1. Select car type	Select model		
2. Load EEprom or	Mercedes R129,W140,W461,W168/414		
Load EE	Editor	Mercedes SLK R170 Chrysler Crossfire Dodge Sprinter,Freightliner Mercedes Sprinter Classic	
3. Select key number		1 2 3 4	
4. Program PCF transponder and Remote			
Program PCF		Program Remote	
Verify			

1. According to EEprom programmer manual, read and save EEprom to your computer.
2. Start KR55 Keymaker software.
3. Select your vehicle.
4. Select "PCF/REMOTE" tab.
5. Click "Load EE" button. Select SKREEM EEprom file you saved on step 1.
6. Check if your vehicle's model is properly displayed in the left lower corner of Keymaker's window.

### KR55 KEYSMAKER

REMOTE/PCF	DODGE/SPRINTER	PCF7935	HITAG2
1. Select car type	Mercedes R129,W140,W461,W168/414		
2. Load EEprom or scan original remote	Scan remote		
Load EE	Editor	key number	
3. Select key number		1 2 3 4	
4. Program PCF transponder and Remote			
Program PCF		Program Remote	
Verify			

Mercedes W168, R129, W414

If model is incorrect - EEprom wasn't read properly. Read and save EEprom again using Orange5, Smok (MBprog) or Carprog with proper Click'n Go adapter and start again from step 2.

## KR55 KEYMAKER

REMOTE/PCF | DODGE/SPRINTER | PCF7935 | HITAG2

1. Select car type Mercedes R129,W140,W461,W168/414
2. Load EEPROM or scan original remote

Load EE

Editor

Scan remote

key number 2

315 MHz

433 MHz

3. Select key number 1 2 3 4
4. Program PCF transponder and Remote

Program PCF

Program Remote

Verify

Mercedes W168, R129, W414



## KR55 KEYMAKER

REMOTE/PCF | DODGE/SPRINTER | PCF7935 | HITAG2

1. Select car type Mercedes R129,W140,W461,W168/414
2. Load EEPROM or scan original remote

Load EE

Editor

Scan remote

key number 2

315 MHz

433 MHz

3. Select key number 1 2 3 4
4. Program PCF transponder and Remote

Program PCF

Program Remote

Verify

Reading

## KR55 KEYMAKER

REMOTE/PCF | DODGE/SPRINTER | PCF7935 | HITAG2

1. Select car type Mercedes R129,W140,W461,W168/414
2. Load EEPROM or scan original remote

Load EE

Editor

Scan remote

key number 2

315 MHz

433 MHz

3. Select key number 1 2 3 4
4. Program PCF transponder and Remote

Program PCF

Program Remote

Verify

Key # 2

7. If vehicle's model displayed correctly, select one of the available key slots.
8. Put a new remote in KeyMaker's programming coil as shown.
9. Click "PROGRAM REMOTE" button.
10. Press and hold "Unlock" button on the new remote until you will hear confirmation sound. Blue light will flash and message "OK, please click verify button" will appear.
11. Click "VERIFY" button. Now press any button on the new fob. "OK" message and sound will confirm successful programming.
12. Transponder programming. Put key with already programmed remote in Keymaker's programming coil. Click "PCF PROGRAM" button. "OK" message and "start" sound will confirm successful transponder programming.
13. Cut the key blade.
14. Now go to the vehicle with new key. If key was correctly programmed, vehicle should start. Turn ignition off, pull key out. Quickly press any button on the remote 5-6 times. Insert key in ignition, turn ignition on (do not start). Quick press any button on the remote few times (5-6 times). Turn ignition off, pull the key out. Remote should start working. Check all functions of the key. Programming is complete.

## 1. Adding the key

You must have at least one working remote for the vehicle. Removal of SKREEM module in this case is not required.

All steps must be completed in order, no steps can be skipped/altered. Please read carefully.

### KR55 KEYMAKER

REMOTE/PCF | DODGE/SPRINTER | PCF7935 | HITAG2

1. Select car type
2. Load EProm or scan original remote
3. Select key number
4. Program PCF transponder and Remote

Program PCF | Program Remote | Verify

### KR55 KEYMAKER

REMOTE/PCF | DODGE/SPRINTER | PCF7935 | HITAG2

1. Select car type Mercedes SLK R170
2. Load EProm or scan original remote
3. Select key number
4. Program PCF transponder and Remote

Program PCF | Program Remote | Verify

SCANNED CORRECTLY



### KR55 KEYMAKER

REMOTE/PCF | DODGE/SPRINTER | PCF7935 | HITAG2

1. Select car type Mercedes SLK R170
2. Load EProm or scan original remote
3. Select key number
4. Program PCF transponder and Remote

Program PCF | Program Remote | Verify

SCANNED CORRECTLY

1. Start KR55 KeyMaker software.
2. Select "PCF/REMOTE" tab.
3. Choose model of the vehicle and frequency of the key. Usually for US and Asian market it's 315 MHz, for the rest of the World - 433 Mhz. After choosing of vehicle type, Keymaker will confirm your choice by voice.
4. Click "Scan remote" button.
5. Hold the original working remote near Keymaker and press "Unlock" button on remote. Original key number will be displayed and selection field will become active. Select one of the available key slots.
6. Click "PROGRAM REMOTE" button.
7. Put a new remote in KeyMaker's programming coil as shown.
8. Press and hold "Unlock" button on the new remote until you will hear confirmation sound. Blue light will flash and message "OK, please click verify button" will appear.

# Mercedes SLK R170



9. Click “**VERIFY**” button. Now press any button on the new fob. “OK” message and sound will confirm successful programming.

10. Transponder programming.  
Put key with already programmed remote in Keymaker's programming coil. Click “**PCF PROGRAM**” button. **Please read message which will appear and choose one of the versions which you think is correct. If programmed key will not start the car you will correct it later.** “OK” message and “start” sound will confirm successful transponder programming.

## KR55 KEYMAKER

REMOTE/PCF | DODGE/SPRINTER | PCF7935 | HITAG2

1. Select car type Mercedes SLK R170

2. Load EEPROM or scan original remote

Load EE | Editor | **Scan remote** | key number 2

315 MHz  
433 MHz CLOSE BUTTON

3. Select key number 1 2 3 4

4. Program PCF transponder and Remote

**Program PCF** | **Program Remote** | **Verify**

Reading

11. Cut the key blade.

12. Now go to the vehicle with new key. If key was correctly programmed and version is correct, vehicle should start. If car doesn't start - go to step 13. If car starts - turn ignition off, pull key out. Quickly press any button on the remote 5-6 times. Insert key in ignition, turn ignition on (do not start). Quickly press any button on the remote few times (5-6 times). Turn ignition off, pull the key out. Remote should start working. Check all functions of the key. Programming is complete.

## KR55 KEYMAKER

REMOTE/PCF | DODGE/SPRINTER | PCF7935 | HITAG2

1. Select car type Mercedes SLK R170

2. Load EEPROM or scan original remote

Choose a date of car production

Version 1 1998-2000 | Version 2 2000-2004

**!ATTENTION!**

If the programmed key did not start the car but the central locking remote control is working, unlock the transponder using the PCF program and program the transponder using a different version [SEE MANUAL](#)

Load EE | Editor | **Scan remote** | key number 2

315 MHz  
433 MHz CLOSE BUTTON

3. Select key number 1 2 3 4

4. Program PCF transponder and Remote

**Program PCF** | **Program Remote** | **Verify**

Key # 2



## KR55 KEYMAKER

REMOTE/PCF | DODGE/SPRINTER | PCF7935 | HITAG2

1. Select car type Mercedes SLK R170

2. Load EEprom or scan original remote

Load EE | Editor | **Scan remote** | key number 5

315 MHz  
433 MHz CLOSE BUTTON

3. Select key number 1 2 3 4

4. Program PCF transponder and Remote

Program PCF | Program Remote | Verify

SCANNED CORRECTLY

## KR55 KEYMAKER

REMOTE/PCF | DODGE/SPRINTER | **PCF7935** | HITAG2

00	01	02	03	04	05	06	07	08	09	0A	0B	0C	0D	0E	0F	0123456789ABCDEF	Load	
0x00	00	00	00	00	00	00	00	00	00	00	00	00	00	00	00	00	.....	Save
0x10	00	00	00	00	00	00	00	00	00	00	00	00	00	00	00	00	.....	Wr All
0x20	00	00	00	00	00	00	00	00	00	00	00	00	00	00	00	00	.....	Unlock
0x30	00	00	00	00	00	00	00	00	00	00	00	00	00	00	00	00	.....	Lock
0x40	00	00	00	00	00	00	00	00	00	00	00	00	00	00	00	00	.....	
0x50	00	00	00	00	00	00	00	00	00	00	00	00	00	00	00	00	.....	
0x60	00	00	00	00	00	00	00	00	00	00	00	00	00	00	00	00	.....	
0x70	00	00	00	00	00	00	00	00	00	00	00	00	00	00	00	00	.....	

**Read** | 00 00 00 00 00 00 00 00 | 00 Adr | Wr Byte

Use Password | 00 Data

## KR55 KEYMAKER

REMOTE/PCF | DODGE/SPRINTER | PCF7935 | HITAG2

1. Select car type Mercedes SLK R170

2. Load EEprom or scan original remote

Load EE | Editor | **Scan remote** | key number 2

315 MHz  
433 MHz CLOSE BUTTON

3. Select key number 1 2 3 4

4. Program PCF transponder and Remote

**Program PCF** | Program Remote | Verify

### 13. Transponder unlocking.

If you choosed incorrect PCF version, transponder should be unlocked and then programmed again.

On "PCF/REMOTE" tab of Keymaker click "**Scan Remote**" button. Click any button on the remote. Key number will be displayed and selection field will become active.

### 14. Insert key in Keymaker's programming coil.

### 15. Click "PCF7935" tab and click "Unlock" button on this tab.

### 16. Within 10 seconds you will see "OK" message. Transponder is successfully unlocked. Now return to step 10 and select differend version for transponder programming.

## 2. All remotes are lost or no working remote available

In this case SKREEM module removal is required. EEprom memory must be read and saved on the computer.

We recommend Orange5, Smok (MBprog) or Carprog programmer with special Click'n Go adapter (corresponding to your SKREEM module model).

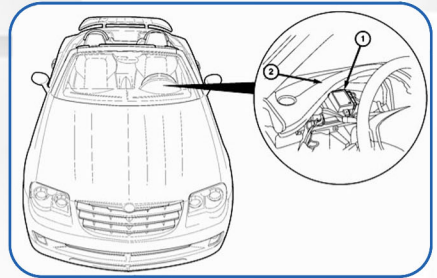
In this case no desoldering required, memory safely can be read.

Of course, you can use another EEprom programmers at your own risk.

**All steps must be completed in order, no steps can be skipped/alterd. Please read carefully.**

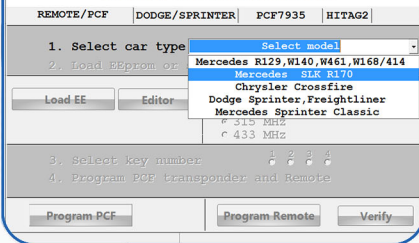


SKREEM adapter with CarProg



SKREEM location

### KR55 KEYSMAKER



1. According to EEprom programmer manual, read and save EEprom to your computer.

2. Start KR55 Keymaker software.

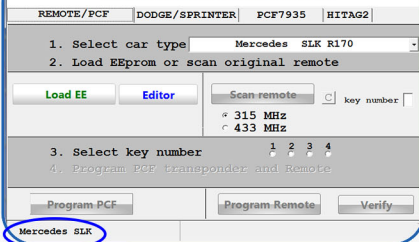
3. Select your vehicle.

4. Select "PCF/REMOTE" tab.

5. Click "Load EE" button. Select SKREEM EEprom file you saved on step 1.

6. Check if your vehicle's model is properly displayed in the left lower corner of Keymaker's window.

### KR55 KEYSMAKER



If model is incorrect - EEprom wasn't read properly. Read and save EEprom again using Orange5, Smok (MBprog) or Carprog with proper Click'n Go adapter and start again from step 2.

# Mercedes SLK R170

## KR55 KEYMAKER

REMOTE/PCF	DODGE/SPRINTER	PCF7935	HITAG2
1. Select car type Mercedes SLK R170			
2. Load EEprom or scan original remote			
Load EE	Editor	Scan remote	key number 2
		<input type="radio"/> 315 MHz	<input type="radio"/> 433 MHz
3. Select key number 1 2 3 4			
4. Program PCF transponder and Remote			
Program PCF	Program Remote	Verify	
Mercedes SLK			



## KR55 KEYMAKER

REMOTE/PCF	DODGE/SPRINTER	PCF7935	HITAG2
1. Select car type Mercedes SLK R170			
2. Load EEprom or scan original remote			
Load EE	Editor	Scan remote	key number 2
		<input type="radio"/> 315 MHz	<input type="radio"/> 433 MHz
3. Select key number 1 2 3 4			
4. Program PCF transponder and Remote			
Program PCF	Program Remote	Verify	
Reading			

## KR55 KEYMAKER

REMOTE/PCF	DODGE/SPRINTER	PCF7935	HITAG2
1. Select car type Mercedes SLK R170			
2. Load EEprom or scan original remote			
Load EE	Editor	Scan remote	key number 2
		<input type="radio"/> 315 MHz	<input type="radio"/> 433 MHz
3. Select key number 1 2 3 4			
4. Program PCF transponder and Remote			
Program PCF	Program Remote	Verify	
Key # 2			

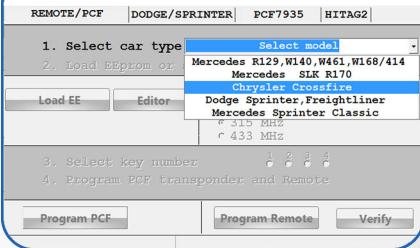
- If vehicle's model displayed correctly, select one of the available key slots.
- Put a new remote in KeyMaker's programming coil as shown.
- Click **"PROGRAM REMOTE"** button.
- Press and hold "Unlock" button on the new remote until you will hear confirmation sound. Blue light will flash and message "OK, please click verify button" will appear.
- Click **"VERIFY"** button. Now press any button on the new fob. "OK" message and sound will confirm successful programming.
- Transponder programming. Put key with already programmed remote in Keymaker's programming coil. Click **"PCF PROGRAM"** button. "OK" message and "start" sound will confirm successful transponder programming.
- Cut the key blade.
- Now go to the vehicle with new key. If key was correctly programmed, vehicle should start. Turn ignition off, pull key out. Quickly press any button on the remote 5-6 times. Insert key in ignition, turn ignition on (do not start). Quickly press any button on the remote few times (5-6 times). Turn ignition off, pull the key out. Remote should start working. Check all functions of the key. Programming is complete.

## 1. Adding the key

You must have at least one working remote for the vehicle.  
Removal of SKREEM module in this case is not required.

**All steps must be completed in order, no steps can be skipped/altered. Please read carefully.**

### KR55 KEYMAKER

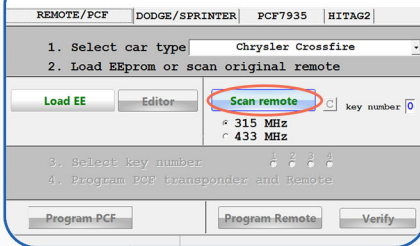


1. Start KR55 KeyMaker software.

2. Select “PCF/REMOTE” tab.

3. Choose model of the vehicle and frequency of the key. Usually for US and Asian market it's 315 MHz, for the rest of the World - 433 Mhz. After choosing of vehicle type, Keymaker will confirm your choice by voice.

### KR55 KEYMAKER



4. Click “Scan remote” button.



5. Hold the original working remote near Keymaker and press “Lock” or “Unlock” button on remote. Original key number will be displayed and selection field will become active. Select one of the available key slots.

# Chrysler Crossfire

## KR55 KEYMAKER

REMOTE/PCF	DODGE/SPRINTER	PCF7935	HITAG2
1. Select car type <input type="text" value="Chrysler Crossfire"/>			
2. Load EEprom or scan original remote			
Load EE	Editor	Scan remote <input type="button" value="C"/>	key number <input type="text" value="2"/>
		315 MHz	CLOSE BUTTON
		433 MHz	CLOSE BUTTON
3. Select key number <input type="text" value="1"/> <input type="text" value="2"/> <input type="text" value="3"/> <input type="text" value="4"/>			
4. Program PCF transponder and Remote			
<input type="button" value="Program PCF"/>	<input type="button" value="Program Remote"/>	<input type="button" value="Verify"/>	
SCANNED CORRECTLY			



## KR55 KEYMAKER

REMOTE/PCF	DODGE/SPRINTER	PCF7935	HITAG2
1. Select car type <input type="text" value="Chrysler Crossfire"/>			
2. Load EEprom or scan original remote			
Load EE	Editor	Scan remote <input type="button" value="C"/>	key number <input type="text" value="2"/>
		315 MHz	CLOSE BUTTON
		433 MHz	CLOSE BUTTON
3. Select key number <input type="text" value="1"/> <input type="text" value="2"/> <input type="text" value="3"/> <input type="text" value="4"/>			
4. Program PCF transponder and Remote			
<input type="button" value="Program PCF"/>	<input type="button" value="Program Remote"/>	<input type="button" value="Verify"/>	

## KR55 KEYMAKER

REMOTE/PCF	DODGE/SPRINTER	PCF7935	HITAG2
1. Select car type <input type="text" value="Chrysler Crossfire"/>			
2. Load EEprom or scan original remote			
Load EE	Editor	Scan remote <input type="button" value="C"/>	key number <input type="text" value="2"/>
		315 MHz	CLOSE BUTTON
		433 MHz	CLOSE BUTTON
3. Select key number <input type="text" value="1"/> <input type="text" value="2"/> <input type="text" value="3"/> <input type="text" value="4"/>			
4. Program PCF transponder and Remote			
<input type="button" value="Program PCF"/>	<input type="button" value="Program Remote"/>	<input type="button" value="Verify"/>	
Key # 1			

6. Click “PROGRAM REMOTE” button.
7. Put a new remote in KeyMaker's programming slot as shown.
8. Press and hold “Unlock” button on the new remote until you will hear confirmation sound. Blue light will flash and message “OK, please click verify button” will appear.
9. Click “VERIFY” button. Now press any button on the new fob. “OK” message and sound will confirm successful programming.
10. Transponder programming. Put key with already programmed remote in Keymaker's programming coil. Click “PCF PROGRAM” button. “OK” message and “start” sound will confirm successful transponder programming.
11. Cut the key blade.
12. Now go to the vehicle with new key. If key was correctly programmed, vehicle should start. Turn ignition off, pull key out. Quickly press any button on the remote 5-6 times. Insert key in ignition, turn ignition on (do not start). Quickly press any button on the remote few times (5-6 times). Turn ignition off, pull the key out. Remote should start working. Check all functions of the key. Programming is complete.

## 2. All remotes are lost or no working remote available

In this case SKREEM module removal is required. EEprom memory must be read and saved on the computer.

We recommend Orange5, Smok (MBprog) or Carprog programmer with special Click'n Go adapter (corresponding to your SKREEM module model).

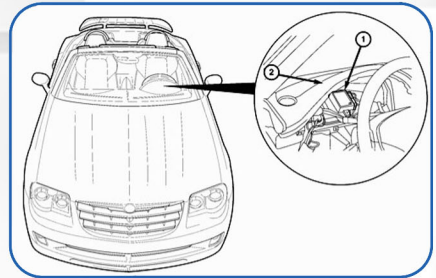
In this case no desoldering required, memory safely can be read.

Of course, you can use another EEprom programmers at your own risk.

All steps must be completed in order, no steps can be skipped/alterd. Please read carefully.



SKREEM adapter with CarProg



SKREEM location

### KR55 KEYMAKER

REMOTE/PCF	DODGE/SPRINTER	PCF7935	HITAG2
1. Select car type <input type="text" value="Select model"/>			
2. Load EEprom or <input type="text" value="Mercedes R129,W140,W461,W168/414"/>			
<input type="text" value="Mercedes SLK R170"/>			
<input type="text" value="Chrysler Crossfire"/>			
<input type="text" value="Dodge Sprinter,Freightliner"/>			
<input type="text" value="Mercedes Sprinter Classic"/>			
<input type="text" value="315 MHz"/>			
<input type="text" value="433 MHz"/>			
<input type="button" value="Load EE"/>		<input type="button" value="Editor"/>	
3. Select key number <input type="text" value="1"/> <input type="text" value="2"/> <input type="text" value="3"/> <input type="text" value="4"/>			
4. Program PCF transponder and Remote			
<input type="button" value="Program PCF"/>		<input type="button" value="Program Remote"/>	
<input type="button" value="Verify"/>			

1. According to EEprom programmer manual, read and save EEprom to your computer.
2. Start KR55 Keymaker software.
3. Select your vehicle.
4. Select "PCF/REMOTE" tab.
5. Click "Load EE" button. Select SKREEM EEprom file you saved on step 1.
6. Check if your vehicle's model is properly displayed in the left lower corner of Keymaker's window.

### KR55 KEYMAKER

REMOTE/PCF	DODGE/SPRINTER	PCF7935	HITAG2
1. Select car type <input type="text" value="Chrysler Crossfire"/>			
2. Load EEprom or scan original remote			
<input type="button" value="Load EE"/>		<input type="button" value="Editor"/>	
<input type="button" value="Scan remote"/>			
<input type="text" value="key number"/>			
<input type="text" value="315 MHz"/>			
<input type="text" value="433 MHz"/>			
3. Select key number <input type="text" value="1"/> <input type="text" value="2"/> <input type="text" value="3"/> <input type="text" value="4"/>			
4. Program PCF transponder and Remote			
<input type="button" value="Program PCF"/>		<input type="button" value="Program Remote"/>	
<input type="button" value="Verify"/>			
<input type="text" value="Chrysler Crossfire"/>			

If model is incorrect - EEprom wasn't read properly. Read and save EEprom again using Orange5, Smok (MBprog) or Carprog with proper Click'n Go adapter and start again from step 2.

# Chrysler Crossfire

## KR55 KEYMAKER

REMOTE/PCF | DODGE/SPRINTER | PCF7935 | HITAG2

1. Select car type

2. Load EEPROM or scan original remote

Load EE Editor

Scan remote  key number

315 MHz  
433 MHz

3. Select key number

4. Program PCF transponder and Remote

Program PCF Program Remote Verify

Chrysler Crossfire



## KR55 KEYMAKER

REMOTE/PCF | DODGE/SPRINTER | PCF7935 | HITAG2

1. Select car type

2. Load EEPROM or scan original remote

Load EE Editor

Scan remote  key number

315 MHz  
433 MHz

3. Select key number

4. Program PCF transponder and Remote

Program PCF Program Remote Verify

Key # 1

## KR55 KEYMAKER

REMOTE/PCF | DODGE/SPRINTER | PCF7935 | HITAG2

1. Select car type

2. Load EEPROM or scan original remote

Load EE Editor

Scan remote  key number

315 MHz  
433 MHz

3. Select key number

4. Program PCF transponder and Remote

Program PCF Program Remote Verify

Key # 1

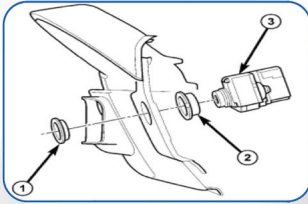
- If vehicle's model displayed correctly, select one of the available key slots.
- Put a new remote in KeyMaker's programming coil as shown.
- Click "Program Remote" button.
- Press and hold "Unlock" button on the new remote until you will hear confirmation sound. Blue light will flash and message "OK, please click verify button" will appear.
- Click "VERIFY" button. Now press any button on the new fob. "OK" message and sound will confirm successful programming.
- Transponder programming. Put key with already programmed remote in Keymaker's programming coil. Click "PCF PROGRAM" button. "OK" message and "start" sound will confirm successful transponder programming.
- Cut the key blade.
- Now go to the vehicle with new key. If key was correctly programmed, vehicle should start. Turn ignition off, pull key out. Quickly press any button on the remote 5-6 times. Insert key in ignition, turn ignition on (do not start). Quickly press any button on the remote few times (5-6 times). Turn ignition off, pull the key out. Remote should start working. Check all functions of the key. Programming is complete.

# Dodge Sprinter, Freightliner

## 1. Adding the key, easiest way.

Programming new remote and transponder clone.

New remote with GMT46 transponder and “GMT46 Black Master Key” must be used.



EIS location

You must have at least one working remote for the vehicle. Removal of EIS module in this case is **not** required.

“GMT46 Black Master Key” is reusable, never cut it or give to the customer! All steps must be completed in order, no steps can be skipped/alterd. Please read carefully.

### KR55 KEYMAKER

REMOTE/PCF | DODGE/SPRINTER | PCF7935 | HITAG2

1. Select car type
2. Load EEprom or scan original remote  
Mercedes R129,W140,W461,W168/414  
Mercedes SLK R170  
Chrysler Crossfire  
Dodge Sprinter, Freightliner  
Mercedes Sprinter Classic  
315 MHz  
433 MHz

3. Select key number

4. Program PCF transponder and Remote

### KR55 KEYMAKER

REMOTE/PCF | DODGE/SPRINTER | PCF7935 | HITAG2

1. Select car type Dodge Sprinter, Freightliner
2. Load EEprom or scan original remote

315 MHz  
433 MHz

3. Select key number

4. Program PCF transponder and Remote

1. Start KR55 KeyMaker software.
2. Select “PCF/REMOTE” tab.
3. Choose model of the vehicle and frequency of the key. Usually for US and Asian market it's 315 MHz, for the rest of the World - 433 Mhz. After choosing of vehicle type, Keymaker will confirm your choice by voice.
4. Click “Scan remote” button.
5. Hold the original working remote near Keymaker and press “Lock” or “Unlock” button on remote. Original key number will be displayed and selection field will become active. Select one of available key slots.





# Dodge Sprinter, Freightliner

## KR55 KEYMAKER

REMOTE/PCF	DODGE/SPRINTER	PCF7936	HITAG2
1. Select car type Dodge Sprinter, Freightliner			
2. Load EEPROM or scan original remote			
Load EE	Editor	Scan remote	key number
		315 MHz	CLOSE BUTTON
		433 MHz	
3. Select key number 1 2 3 4			
4. Program PCF transponder and Remote			
Program PCF	Program Remote	Verify	
SCANNED CORRECTLY			

6. Click **“Program Remote”** button.
7. Put a new remote with GMT46 transponder in KeyMaker's programming coil as shown.
8. Press and hold **“Unlock”** button on the new remote until you will hear confirmation sound. Blue light will flash and message **“OK, please click verify button”** will appear.
9. Click **“VERIFY”** button. Now press any button on the new remote. **“OK”** message and sound will confirm successful programming.



## KR55 KEYMAKER

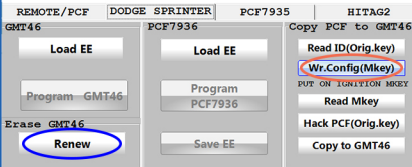
REMOTE/PCF	DODGE SPRINTER	PCF7936	HITAG2
GMT46	PCF7936	Copy PCF to GMT46	
Load EE	Load EE	Read ID(Orig.key)	
Program GMT46	Program PCF7936	Wr.Config(Mkey)	
Erase GMT46		PUT ON IGNITION MKEY	
Renew	Save EE	Read Mkey	
		Hack PCF(Orig.key)	
		Copy to GMT46	
ID = B423271E			

10. **Transponder clone.**  
Select **“DODGE/SPRINTER”** tab.
11. Put original key with PCF7936 in Keymaker's programming slot. Click **“Read ID”** button. **Transponder's ID** will be shown.
12. Put **“GMT46 Black Master Key”** in KeyMaker's programming coil.



# Dodge Sprinter, Freightliner

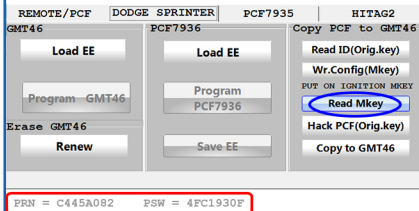
## KR55 KEYMAKER



13. Click “Renew” button and then click “Wr.Config(Mkey)” button.
14. Now go to the van with this prepared key and put it in ignition for 5 seconds (no cutting or turning the key in ignition required!).
15. Pull the key out and put it in Keymaker's programming coil. Click “Read Mkey” button. Status should be shown (numbers on the bottom). If all numbers are the “0”, “1” or just “Error” message appears, go to step 10 and repeat process again.



## KR55 KEYMAKER



16. If status shown correctly (not all “0” or “1”), then put original (working) key in Keymaker's programming slot. Click “Hack PCF(Orig.key)” button. It will take few seconds, status will be shown during process. Wait until “Success” will appear.
17. Now put new remote with GMT46 transponder and programmed earlier remote in Keymaker's programming coil.

18. Click “Copy to GMT46” button. “Successful” message will appear on the bottom.

19. Cut the key blade

20. Now go to the vehicle with new key. If key was correctly programmed, vehicle should start. Turn ignition off, pull key out. Quickly press any button on the remote 5-6 times. Insert key in ignition, turn ignition on (do not start). Quickly press any button on the remote few times (5-6 times). Turn ignition off, pull the key out. Remote should start working. Check all functions of the key. Programming is complete.

# Dodge Sprinter, Freightliner

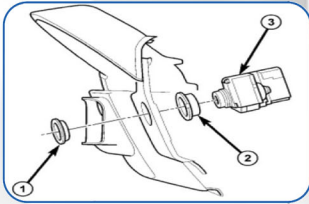
## 1. Adding the key (remote).

Programming new remote and new transponder programming (if you don't have the "GMT46 Black Master Key").

New remote with GMT46 or PCF7936 transponder required.

You must have at least one working remote for the vehicle. Removal of EIS module in this case is required. EEprom memory must be read and saved on computer.

We recommend Smok (MBprog) programmer for proper result, but you can use other EEprom reader at your own risk.



EIS location

### KR55 KEYMAKER

REMOTE/PCF | DODGE/SPRINTER | PCF7936 | HITAG2

1. Select car type
2. Load EEprom or scan original remote  
Mercedes R129,W140,W461,W168/414  
Mercedes SLK R170  
Chrysler Crossfire  
Dodge Sprinter, Freightliner  
Mercedes Sprinter Classic  
315 MHz  
433 MHz

3. Select key number 1 2 3 4  
4. Program PCF transponder and Remote

Program-PCF Program-Remote Verify

All steps must be completed in order, no steps can be skipped/altered. Please read carefully.

1. Start KR55 KeyMaker software.
2. Select "PCF/REMOTE" tab.
3. Choose model of the vehicle and frequency of the key. Usually for US and Asian market it's 315 MHz, for the rest of the World - 433 Mhz. After choosing of vehicle type, Keymaker will confirm your choice by voice.

4. Click "Scan remote" button.
5. Hold the original working remote near Keymaker and press "Lock" or "Unlock" button on remote. Original key number will be displayed and selection field will become active. Select one of available key slots.

### KR55 KEYMAKER

REMOTE/PCF | DODGE/SPRINTER | PCF7936 | HITAG2

1. Select car type Dodge Sprinter, Freightliner
2. Load EEprom or scan original remote  
Load EE Editor Scan remote key number 0  
315 MHz  
433 MHz

3. Select key number 1 2 3 4  
4. Program PCF transponder and Remote

Program-PCF Program-Remote Verify



# Dodge Sprinter, Freightliner

## KR55 KEYMAKER

REMOTE/PCF DODGE/SPRINTER PCF7935 HITAG2

1. Select car type Dodge Sprinter, Freightliner

2. Load EEprom or scan original remote

Load EE Editor Scan remote key number

315 MHz CLOSE BUTTON  
433 MHz

3. Select key number 1 2 3 4

4. Program PCF transponder and Remote

Program PCF Program Remote Verify

SCANNED CORRECTLY

## KR55 KEYMAKER

REMOTE/PCF DODGE/SPRINTER PCF7935 HITAG2

1. Select car type Dodge Sprinter, Freightliner

2. Load EEprom or scan original remote

Load EE Editor Scan remote key number

VIN:WD3BE8CCTE5833765

315 MHz  
433 MHz

3. Select key number 1 2 3 4 5 6 7 8

4. Program PCF transponder and Remote

Program PCF Program Remote Verify

Key # 1

## KR55 KEYMAKER

REMOTE/PCF DODGE/SPRINTER PCF7935 HITAG2

GMT46 PCF7936 Copy PCF to GMT46

Load EE LOADED OK! Program GMT46 Erase GMT46 Renew

Load EE LOADED OK! Program PCF7936 Save EE

Read ID(Orig.key) Wr.Config(Mkey) Read Mkey Hack PCF(Orig.key) Copy to GMT46

PUT ON IGNITION MKEY

You must used PCF7936 or GMT46 transponder for programming

## KR55 KEYMAKER

REMOTE/PCF DODGE/SPRINTER PCF7935 HITAG2

GMT46 PCF7936 Copy PCF to GMT46

Load EE LOADED OK! Program GMT46 Erase GMT46 Renew

Load EE LOADED OK! Program PCF7936 Save EE

Read ID(Orig.key) Wr.Config(Mkey) Read Mkey Hack PCF(Orig.key) Copy to GMT46

PUT ON IGNITION MKEY

WR & Verify Ok  
Dump EE Changed

- Click "Program Remote" button.
- Put a new remote in KeyMaker's programming coil as shown.
- Press and hold "Unlock" button on the new remote until you will hear confirmation sound. Blue light will flash and message "OK, please click verify button" will appear.
- Click "VERIFY" button. Now press any button on the new remote. "OK" message and sound will confirm successful programming.
- According to EEprom programmer manual, read and save EEprom to your computer.
- Click "Load EE" button. Select EEprom file from the EIS.
- Select one of the available key numbers in "Select key number" field.
- If new key has GMT46 chip, click "Program GMT46" button. Once message "OK! Rewrite all chip" appears, chip programming is complete.
- If new key has PCF7936 chip, click "Program PCF7936" button. In a few seconds "WR and Verify OK. Dump EE changed" will appear. Now you need to rewrite modified dump back to EIS module, otherwise new key won't work.
- Click "Save EE" button to save new EEprom on your computer.

**16.** Cut the key blade.

**17.** Now go to the vehicle with new key. If key was correctly programmed, vehicle should start. Turn ignition off, pull key out. Quickly press any button on the remote 5-6 times. Insert key in ignition, turn ignition on (do not start). Quickly press any button on the remote few times (5-6 times). Turn ignition off, pull the key out. Remote should start working. Check all functions. Programming is complete.

**1. All keys lost. New remote with GMT46 or PCF7936 transponder required. Removal of EIS module in this case is required. EEprom memory must be read and saved on computer. We recommend Smok (MBprog) programmer for proper result, but you can use other EEprom reader at your own risk.**

**All steps must be completed in order, no steps can be skipped/alterred. Please read carefully.**

## KR55 KEYMAKER

REMOTE/PCF | DODGE/SPRINTER | PCF7935 | HITAG2

1. Select car type

2. Load EEprom or

3. Select key number

4. Program PCF transponder and Remote

1. According to EEprom programmer manual, read and save EEprom to your computer.
2. Start KR55 KeyMaker software.
3. Select "PCF/REMOTE" tab. Select your vehicle.
4. Click "Load EE" button. Select EEprom file which you saved on step 1. Verify that your vehicle is properly identified (message in the left bottom corner). If there is "Error" message - EEprom wasn't read properly. Read and save EEprom again using Orange5, Smok (MBprog) or Carprog with proper Click'n Go adapter and start again from step 2.

## KR55 KEYMAKER

REMOTE/PCF | DODGE/SPRINTER | PCF7935 | HITAG2

1. Select car type

2. Load EEprom or scan original remote

VIN:WD3BE8C7E5833765

3. Select key number

4. Program PCF transponder and Remote

Dodge Sprinter

4. Click "Load EE" button. Select EEprom file which you saved on step 1. Verify that your vehicle is properly identified (message in the left bottom corner). If there is "Error" message - EEprom wasn't read properly. Read and save EEprom again using Orange5, Smok (MBprog) or Carprog with proper Click'n Go adapter and start again from step 2.
5. Select available key slot in "Select key number" field.

## KR55 KEYMAKER

REMOTE/PCF | DODGE/SPRINTER | PCF7935 | HITAG2

1. Select car type

2. Load EEprom or scan original remote

VIN:WD3BE8C7E5833765

3. Select key number

4. Program PCF transponder and Remote

Dodge Sprinter

5. Select available key slot in "Select key number" field.
6. Put a new remote in Keymaker's programming coil. Click "Program remote" button.

# Dodge Sprinter, Freightliner



7. Press and hold “Unlock” button on the new remote until you will hear confirmation sound. Blue light will flash and message “OK, please click verify button” will appear.
8. Click “**VERIFY**” button. Now press any button on the new fob. “OK” message and sound will confirm successful programming.

## KR55 KEYMAKER

REMOTE/PCF	DODGE/SPRINTER	PCF7935	HITAG2
1. Select car type Dodge Sprinter, Freightliner			
2. Load EEPROM or scan original remote			
Load EE	Editor	Scan remote	key number
		315 MHz	CLOSE BUTTON
		433 MHz	
3. Select key number 1 2 3 4			
4. Program PCF transponder and Remote			
Program PCF	Program Remote	Verify	
Reading			

9. Click “Load EE” button. Select EEPROM file which you saved on step 1. Select available key slot in “Select key number” field.

10. If new remote has GMT46 chip, click “Program GMT46” button. Once message “OK! Rewrite all chip” appears, chip programming is complete.

## KR55 KEYMAKER

REMOTE/PCF	DODGE/SPRINTER	PCF7935	HITAG2
GMT46	PCF7936	Copy PCF to GMT46	
Load EE	Load EE	Read ID(Orig.key)	
LOADED OK!	LOADED OK!	Wr.Config(Mkey)	
Program GMT46	Program PCF7936	POP ON IGNITION MKEY	
Erase GMT46		Read Mkey	
Renew	Save EE	Hack PCF(Orig.key)	
		Copy to GMT46	

You must use PCF7936 or GMT46 transponder for programming

11. If new remote has PCF7936 chip, click “Program PCF7936” button. In a few seconds “WR and Verify OK. Dump EE changed” will appear. Now you need to rewrite modified dump back to EIS module, otherwise new key won't work.

12. Click “Save EE” button and save new EEPROM on your computer.
13. Cut the key blade.

14. Now go to the vehicle with new key. If key was correctly programmed, vehicle should start. Turn ignition off, pull key out. Quickly press any button on the remote 5-6 times. Insert key in ignition, turn ignition on (do not start). Quickly press any button on the remote few times (5-6 times). Turn ignition off, pull the key out. Remote should start working. Check all functions.

Programming is complete.